

Style plexy

Complete Product
Mechanism + Cover Plate + Frame



New Style Callers, New Series





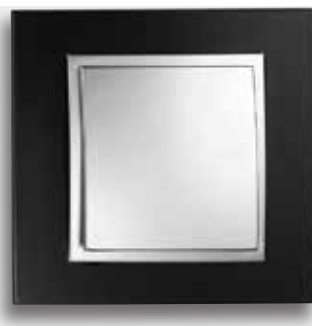
AESTHETICS AND HIGH DURABILITY - TOGETHER WITH PLEXY SERIE

STYLE PLEXY which gives you an alternative new style in every area with its angular and modern lines, offering high-tech and aesthetics together. With its modern look, luxury and a new generation aesthetic material plexy is a new decoration material option for your comfort areas. White, Black and Golden color options combined with a choice of 10 charming colors.

COLOURS



White



Black



Golden

GROUP OF PRODUCTS



One Way Switch	
10AX, 250 V	
Mechanism + Cover Plate	
Screwless Code	500-00XX 35-100
Screw Type Code	500-00XX 25-100
Frame Code	107-XX00 00-160



One Way Switch Illuminated	
10AX, 250 V	
Mechanism + Cover Plate	
Screwless Code	500-00XX 35-101
Screw Type Code	500-00XX 25-101
Frame Code	107-XX00 00-160



Double One Way Switch	
10AX, 250 V	
Mechanism + Cover Plate	
Screwless Code	500-00XX 35-102
Screw Type Code	500-00XX 25-102
Frame Code	107-XX00 00-160



Double One Way Switch Illuminated	
10AX, 250 V	
Mechanism + Cover Plate	
Screwless Code	500-00XX 35-103
Screw Type Code	500-00XX 25-103
Frame Code	107-XX00 00-160



Two Way Switch	
10AX, 250 V	
Mechanism + Cover Plate	
Screwless Code	500-00XX 35-109
Screw Type Code	500-00XX 25-109
Frame Code	107-XX00 00-160



Two Way Switch Illuminated	
10AX, 250 V	
Mechanism + Cover Plate	
Screwless Code	500-00XX 35-110
Screw Type Code	500-00XX 25-110
Frame Code	107-XX00 00-160



Double Two Way Switch	
10AX, 250 V	
Mechanism + Cover Plate	
Screwless Code	500-00XX 33-111
Screw Type Code	500-00XX 23-111
Frame Code	107-XX00 00-160



Two Way Switch - Intermediate	
10AX, 250 V	
Mechanism + Cover Plate	
Screwless Code	500-00XX 35-112
Screw Type Code	500-00XX 25-112
Frame Code	107-XX00 00-160



Control Switch - Light	
10AX, 250 V	
Mechanism + Cover Plate	
Screwless Code	500-00XX 35-105
Screw Type Code	500-00XX 25-105
Frame Code	107-XX00 00-160



Control Switch - Light Illuminated	
10AX, 250 V	
Mechanism + Cover Plate	
Screwless Code	500-00XX 35-106
Screw Type Code	500-00XX 25-106
Frame Code	107-XX00 00-160



Control Switch - Bell	
10AX, 250 V	
Mechanism + Cover Plate	
Screwless Code	500-00XX 35-107
Screw Type Code	500-00XX 25-107
Frame Code	107-XX00 00-160



Control Switch - Bell Illuminated	
10AX, 250 V	
Mechanism + Cover Plate	
Screwless Code	500-00XX 35-155
Screw Type Code	500-00XX 25-155
Frame Code	107-XX00 00-160

Please specify your choice for product and frame colours by applying below codes 'XX' marked space.

XX:  90 WHITE  91 BLACK  92 GOLDEN



Control Switch - Bell With Name Plate
10AX, 250 V
Mechanism + Cover Plate
Screwless Code 500-00XX 35-129
Screw Type Code 500-00XX 25-129
Frame Code 107-XX00 00-160



Control Switch - Door
10AX, 250 V
Mechanism + Cover Plate
Screwless Code 500-00XX 35-104
Screw Type Code 500-00XX 25-104
Frame Code 107-XX00 00-160



Roller Blind Two Way Switch
10AX, 250 V
Mechanism + Cover Plate
Screw Type Code 500-00XX 25-159
Frame Code 107-XX00 00-160



Roller Blinds Double One Way Switch
10AX, 250 V
Mechanism + Cover Plate
Screwless Code 500-00XX 35-113
Screw Type Code 500-00XX 25-113
Frame Code 107-XX00 00-160



Air Conditioning Switch
25A, 250 V
Mechanism + Cover Plate
Screw Type Code 500-00XX 06-115
Frame Code 107-XX00 00-160



Heater - Boiler Switch
25A, 250 V
Mechanism + Cover Plate
Screw Type Code 500-00XX 06-154
Frame Code 107-XX00 00-160



Triple One Way Switch (3 Gang 1 Way)
10AX, 250 V
Mechanism + Cover Plate
Screwless Code 500-00XX 32-114
Screw Type Code 500-00XX 22-114
Frame Code 107-XX00 00-160



Triple Two Way Switch (3 Gang 2 Way)
10AX, 250 V
Mechanism + Cover Plate
Screw Type Code 500-00XX 02-108
Frame Code 107-XX00 00-160



Cooling Switch
16A, 250 V
Mechanism + Cover Plate
Screw Type Code 500-00XX 06-141
Frame Code 107-XX00 00-160



Audio Switch
Mechanism + Cover Plate
Screw Type Code 500-00XX 06-123
Frame Code 107-XX00 00-160



Dimmer 800W / Dimmer Filtered 500W
Mechanism + Cover Plate
Screw Type Code 500-00XX 05-134
500-00XX 05-135
Frame Code 107-XX00 00-160



**Two Way Dimmer 300W
RC Dimmer 300W**
Mechanism + Cover Plate
Screw Type Code 500-00XX 05-147
500-00XX 05-179
Frame Code 107-XX00 00-160

Example: 500-002125-100 → Mechanism with Cover Plate "Silver" (code 21)
107-920000-160 → Frame "Golden" (code 92)



Hotel Warning System Interior Unit
10AX, 250 V
Mechanism + Cover Plate
Screw Type Code 500-00XX 05-186
Frame Code 107-XX00 00-160



Hotel Warning System Exterior Unit
10AX, 250 V
Mechanism + Cover Plate
Screw Type Code 500-00XX 05-187
Frame Code 107-XX00 00-160



Automation Switch
Automation Switch Single Phase
Automation Switch Double Phase
10AX, 250 V
Mechanism + Cover Plate
Screw Type Code 500-00XX 05-172
500-00XX 05-173
500-00XX 05-174
Frame Code 107-XX00 00-160



Energy Saver Optic
Energy Saver RFID
Energy Saver Mechanical (220V)
Mechanism + Cover Plate
Screw Type Code 500-00XX 05-136
500-00XX 25-136
500-00XX 05-152
Frame Code 107-XX00 00-160



Socket Outlet
16A, 250 V
Mechanism + Cover Plate
Screwless Code 500-00XX 32-116
Screw Type Code 500-00XX 22-116
Frame Code 107-XX00 00-160



Buzzer Bell
Mechanism + Cover Plate
Screw Type Code 500-00XX 05-133
Frame Code 107-XX00 00-160



Socket Outlet Earthed
16A, 250 V
Mechanism + Cover Plate
Screwless Code 500-00XX 31-117
Screw Type Code 500-00XX 21-117
Frame Code 107-XX00 00-160



Childproof Socket Outlet Earthed
16A, 250 V
Mechanism + Cover Plate
Screwless Code 500-00XX 31-119
Screw Type Code 500-00XX 21-119
Frame Code 107-XX00 00-160



Socket Outlet Earthed With Protection Cover
16A, 250 V
Mechanism + Cover Plate
Screwless Code 500-00XX 31-118
Screw Type Code 500-00XX 21-118
Frame Code 107-XX00 00-160



Childproof Socket Outlet Earthed With Protection Cover
16A, 250 V
Mechanism + Cover Plate
Screwless Code 500-00XX 31-158
Screw Type Code 500-00XX 21-158
Frame Code 107-XX00 00-160



UPS Socket Outlet
16A, 250 V
Mechanism + Cover Plate
Screwless Code 500-00XX 33-122
Screw Type Code 500-00XX 23-122
Frame Code 107-XX00 00-160



UPS Childproof Socket Outlet
16A, 250 V
Mechanism + Cover Plate
Screwless Code 500-00XX 33-129
Screw Type Code 500-00XX 23-129
Frame Code 107-XX00 00-160

Please specify your choice for product and frame colours by applying below codes 'XX' marked space.

XX: 90 WHITE 91 BLACK 92 GOLDEN



TV Socket Outlet - Through Line (11 dB)
TV Socket Outlet - End Of Line (0,5 dB)
TV Satellite Socket Outlet

Mechanism + Cover Plate

Code	500-00XX 05-137
	500-00XX 05-138
	500-00XX 05-127

Frame Code	107-XX00 00-160
-------------------	-----------------



Satellite Socket Outlet (F-Type Female Connector)
Satellite Socket Outlet - Through Line
Satellite Socket Outlet - End of Line

Mechanism + Cover Plate

Code	500-00XX 05-130
	500-00XX 05-148
	500-00XX 05-149

Frame Code	107-XX00 00-160
-------------------	-----------------



TV Socket Outlet - Through Line
TV Socket Outlet - End of Line

Mechanism + Cover Plate

Code	500-00XX 05-170
	500-00XX 05-171

Frame Code	107-XX00 00-160
-------------------	-----------------



TV+Satellite Socket Outlet - Through Line (5 dB)
TV+Satellite Socket Outlet - End Of Line (1 dB)

Mechanism + Cover Plate

Code	500-00XX 05-139
	500-00XX 05-140

Frame Code	107-XX00 00-160
-------------------	-----------------



Audio Socket Outlet

Mechanism + Cover Plate

Code	500-00XX 05-181
------	-----------------

Frame Code	107-XX00 00-160
-------------------	-----------------



TV Radio Satellite Socket Outlet - Through Line

Mechanism + Cover Plate

Code	500-00XX 06-146
------	-----------------

Frame Code	107-XX00 00-160
-------------------	-----------------



Data Socket Outlet (Empty)

Mechanism + Cover Plate

Code	500-00XX 05-150
------	-----------------

Frame Code	107-XX00 00-160
-------------------	-----------------



Double Data Socket Outlet (Empty)

Mechanism + Cover Plate

Code	500-00XX 05-151
------	-----------------

Frame Code	107-XX00 00-160
-------------------	-----------------



Telephone Socket Outlet (Rj11 623K)
Telephone Socket Outlet (Rj45 Cat 3)

Mechanism + Cover Plate

Code	500-00XX 05-124
------	-----------------

	500-00XX 25-124
--	-----------------

Frame Code	107-XX00 00-160
-------------------	-----------------



Double Telephone Socket Outlet (2xRj11 623K)
Double Telephone Socket Outlet (2xRj45 Cat 3)

Mechanism + Cover Plate

Code	500-00XX 05-176
------	-----------------

	500-00XX 05-131
--	-----------------

Frame Code	107-XX00 00-160
-------------------	-----------------



Double Data Socket Outlet (2xRj45 Cat 6)

Mechanism + Cover Plate

Code	500-00XX 05-126
------	-----------------

Frame Code	107-XX00 00-160
-------------------	-----------------



Data Socket Outlet (Rj45 Cat 6)
Data Socket Outlet (Cat 6A)

Mechanism + Cover Plate

Code

Frame Code	500-00XX 05-125
-------------------	-----------------

	500-00XX 05-190
--	-----------------

	107-XX00 00-160
--	-----------------

Example: 500-002125-100 → Mechanism with Cover Plate "Silver" (code 21)
107-920000-160 → Frame "Golden" (code 92)



**Data Socket Outlet (Rj45 Cat 6)
With Dustproof Cover**
Mechanism + Cover Plate
Code 500-00XX 05-182
Frame Code 107-XX00 00-160



**Data+Telephone Socket Outlet
(Rj45 Cat 6+Rj45 Cat 3)**
Mechanism + Cover Plate
Code 500-00XX 05-132
Frame Code 107-XX00 00-160



USB Socket Outlet
Mechanism + Cover Plate
Code 500-00XX 05-144
Frame Code 107-XX00 00-160



HDMI Socket Outlet
Mechanism + Cover Plate
Code 500-00XX 05-145
Frame Code 107-XX00 00-160



Music Hi-Fi Socket Outlet - 2 Gang
Mechanism + Cover Plate
Code 500-00XX 05-142
Frame Code 107-XX00 00-160



USB Charger Socket Outlet (5V - 2,4A)
Mechanism + Cover Plate
Code 500-00XX 05-177
Frame Code 107-XX00 00-160



VGA Socket Outlet
Mechanism + Cover Plate
Code 500-00XX 05-180
Frame Code 107-XX00 00-160



Double USB Charger Socket Outlet (5V-2,4A)
Mechanism + Cover Plate
Code 500-00XX 05-178
Frame Code 107-XX00 00-160



Cable Outlet Cover (Empty)
Mechanism + Cover Plate
Code 500-00XX 05-175
Frame Code 107-XX00 00-160

Example: 500-002125-100 → Mechanism with Cover Plate "Silver" (code 21)
107-920000-160 → Frame "Golden" (code 92)

PRODUCT CODE	PRODUCT NAME	BOX QUANTITY	PACKAGE QUANTITY	GROSS WEIGHT	VOLUME M ³
FRAMES					
107-XX00 00-160	Single Frame	1	5	0,26	0,0008
107-XX00 00-161	Double Frame	1	5	0,41	0,0010
107-XX00 00-162	Triple Frame	1	5	0,56	0,0018
107-XX00 00-163	4 Gang Frame	1	5	0,71	0,0040
107-XX00 00-164	5 Gang Frame	1	5	0,86	0,0053

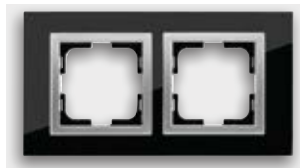
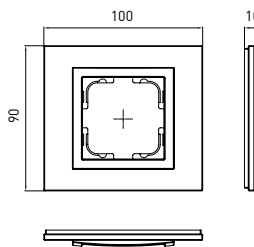
Please specify your choice for frame colours by applying below codes 'XX' marked space.

XX: 90 WHITE 91 BLACK 92 GOLDEN

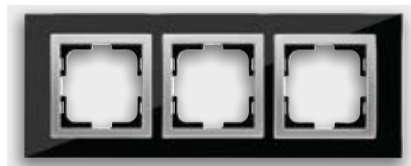
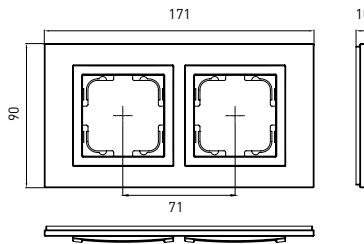
TECHNICAL DRAWINGS



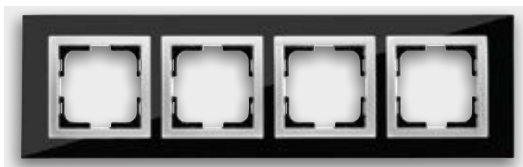
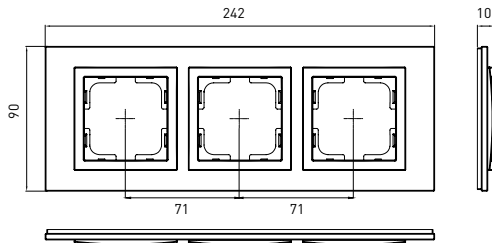
Single Frame



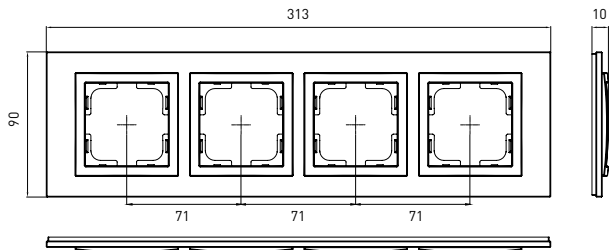
Double Frame



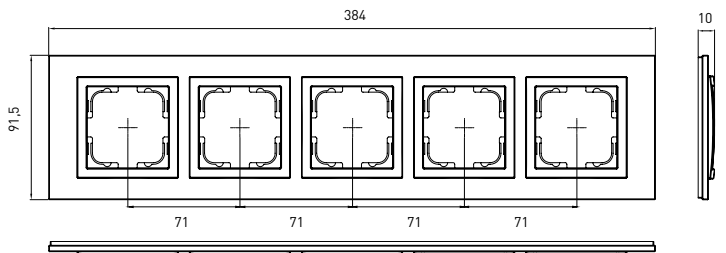
Triple Frame



4 Gang Frame



5 Gang Frame



Style Plexy frames can be used both horizontally and vertically.